

RESIDENTIAL ARCHITECTURE - ALTERATIONS AND ADDITIONS AWARD

[01]

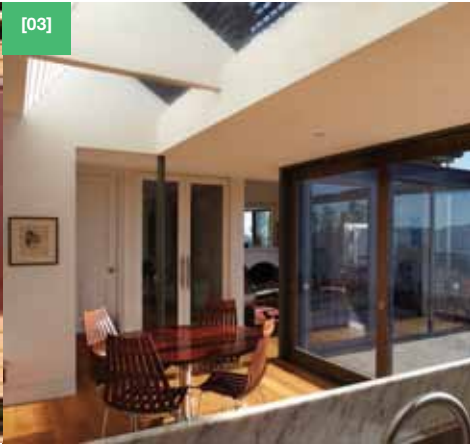


Photograph [01] [02] [03] by Peter Whyte

[02]



[03]



Patrick Street Residence

Liminal Spaces, www.liminalstudio.com.au

Builder: Edwards Builders

The Patrick Street Residence is a clear, refined and complementary addition to a respectfully restored late Federation Queen Anne cottage in West Hobart. Whilst doubling the area of the existing cottage, the addition is discreetly scaled and arranged carefully around the low central spine which continues the line of existing corridor through the length of the building as it seamlessly expands into the living areas and outdoor room. This glass walled courtyard becomes the centrepiece of the home, bathing it in light and introducing a playful ambiguous quality about the threshold to outside. Clever lighting and ventilation strategies combine with calm material choices, considered detailing and quality construction.

INTERIOR ARCHITECTURE COMMENDATION



[01]



Photograph [01] [02] [03] by Peter Whyte

[02]



[03]

Tony Hill Dental

Liminal Spaces, www.liminalstudio.com.au

Builder: Macquarie Builders

This small tenancy fit-out successfully facilitates contemporary dental practice in a non-clinical environment. An existing Max Angus mosaic on the building façade has inspired the spatial treatment and use of colour, influencing the way that spaces are divided, surfaces are treated and lighting is articulated. The planning and program resolution maximises efficient workflow while providing a clear delineation of public and private zones. A translucent wall offers a heightened sense of space and quality of natural light to the internal public areas and contributes to the perceived spatial generosity of the reception, waiting and circulation areas. The interview room allows consultation in a less intimidating environment while facilitating greater operational efficiencies. Thoughtful use of materials and colours warms and humanises a potentially clinical environment and connects intuitively with the heritage of the building it inhabits.